



**J.PSARRAS S+P ,CHART-PIRAEUS (since 1981)**

Ph:+30 210 4123696 4133931 4115482

Fx:+30 210 4170618

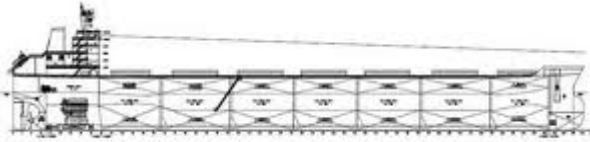
E'Mail: [psarras@psarrasj.gr](mailto:psarras@psarrasj.gr) Website: [www.psarrasj.gr](http://www.psarrasj.gr)  
(Members of Hellenic Shipbrokers Association - 1984)

## **BI-MONTH REPORT**

**MID AUGUST 2015**

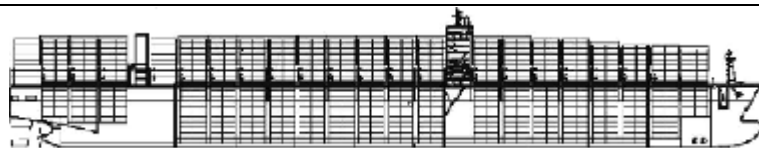
**The scope of this report is to assist our clients and friends with a quick glance every about 15 days to get a feeling of the market by reading the more interesting sales in view of higher or lower prices of the main vessels types as well as the demolition prevailing prices.**





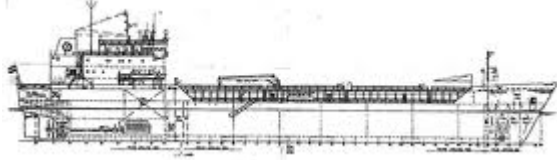
## BULK CARRIERS

NAME	DWT	Y.O.B	P.O.B	PRICE
HOUHENG 2	179928	2011	PHILIPPINES	30,5 MIL USD TO BELGIANS
CHURCHILL BULKER	179600	2011	S.KOREA	33,6 MIL USD TO GREEKS
UMBERTO D'AMATO	92500	2011	CHINA	14,5 MIL USD TO UNDISCLOSED
RONDEAU	77031	2006	JAPAN	13,8 MIL USD TO GREEKS
TORM BORNHOLM TORM ANHOLT	75912 74195	2004	JAPAN	EN BLOC 22 MIL USD TO GREEK
OLYMPIAS	52817	2001	JAPAN	7,2 MIL USD TO GREEKS
SALUS	29321	1997	CHINA	P+C
SANTA FRANSICA	28494	2001	JAPAN	5,75 MIL USD TO VIETNAMESE
MA SIK RYONG	18612	1987	JAPAN	1 MIL USD VIA AUCTION TO UNDISCLOSED



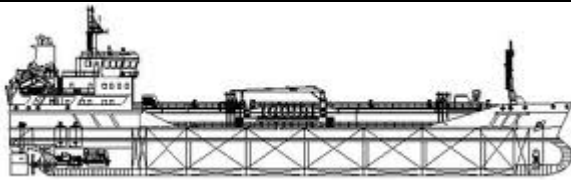
## CONTAINER SHIPS

NAME	DWT	TEU	Y.O.B.	P.O.B	PRICE
OOCL NINGBO	99500	8038	2004	S.KOREA	53,6 MIL USD TO US BASED
CAP DOMINGO	51087	3739	2001	S.KOREA	24 MIL USD TO US BASED
ZIM USA ZIM CHINA	46350 45850	3429	1997	GERMANY	EN BLOC 15,5 MIL USD TO CHINESE



## GENERAL CARGO

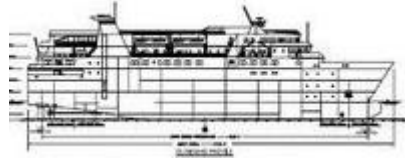
NAME	DWT	Y.O.B	P.O.B	PRICE
MARK C	19465	2003	NETHERLANDS	14 MIL USD TO BRAZILAINS
MACAO	19366	2010	CHINA	30 MIL USD TO GERMANS VIA AUCTION
CLARA	7600	2006	CHINA	3,8 MIL USD TO UNDISCLOSED
CATALINA D	7578	2007	CHINA	3,8 MIL USD TO UNDISCLOSED



## TANKERS

NAME	DWT	HULL	Y.O.B	P.O.B.	PRICE
<b>PRINCIMAR</b>		DH			EN BLOC 662 MIL USD TO US BASED
-FAITH	160000		2005	S.KOREA	
-TRUTH	159200		2007	S.KOREA	
-HOPE	158500		2011	S.KOREA	
-PRIDE	158500		2012	S.KOREA	
-INTEGRITY	158500		2012	S.KOREA	
-PROMISE	158500		2011	S.KOREA	
-GRACE	158400		2011	S.KOREA	
-COURAGE	158300		2013	S.KOREA	
-JOY	156500		2010	CHINA	
-STRENGTH	156500		2010	CHINA	
-CONFIDENCE	150000		2006	JAPAN	
-LOYALTY	150000		2006	JAPAN	
SN AZZURA SN FEDERICA	72365 72344	DH	2003	CHINA	EN BLOC 40 MIL USD TO DANISH
STI PONTIAC	50000	DH	2015	S.KOREA	37 MIL USD TO MONEGASQ

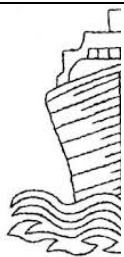
AQUAMARINE II	49995	DH	2014	S.KOREA	UE 37.1 MIL USD TO MONEGASQ UE
VALORIOUS QUEEN	19986	DH	2011	JAPAN	27,5 MIL USD TO CHINESE



## PASSENGER SHIPS

## RO/RO CRUISE SHIPS

<b>NAME</b>	<b>DWT</b>	<b>Y.O.B</b>	<b>P.O.B</b>	<b>PRICE</b>
SIETAS 1297	800	UNFINISHED HULL	UNFINISHED HULL,KEEL LAID IN GERMAN	P+C
AEGEAN PARADISE	4863	1989	JAPAN	23 MIL USD TO FAR EASTERN



# DEMOLITION



## BANGLADESH

NAME	LDT	DWT	Y.O.B	P.O.B.	PRICE
JINDAL TARA	3441	7837	1995	CHINA	317 USD PER LDT



## PAKISTAN

NAME	LDT	DWT	Y.O.B	P.O.B.	PRICE
ORE ALEGRIA	20693	160817	1997	S.KOREA	328 USD PER LDT



## INDIA

NAME	LDT	DWT	Y.O.B	P.O.B.	PRICE
SEA LARK	4820	21520	1985	JAPAN	292 USD PER LDT

### **Disclaimer**

All information stated in this report has been collected from a variety of maritime sources and is presented in good faith and without any guarantee from our part .

J. PSARRAS S+P CHARTERING, shall not accept any responsibility for any errors and/or omissions arising from this report and cannot be held responsible for any action taken and/or losses occurred as a result of the details included in this report.

Recirculation of same is not permitted without the written agreement of the aforementioned company, which is the only entitled one to produce copies of same.